



CGN

VENTILAZIONE INDUSTRIALE

COMPANY PROFILE

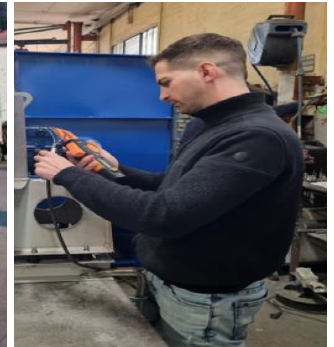


OUR COMPANY

OUR FAMILY AFFAIR SINCE 1964

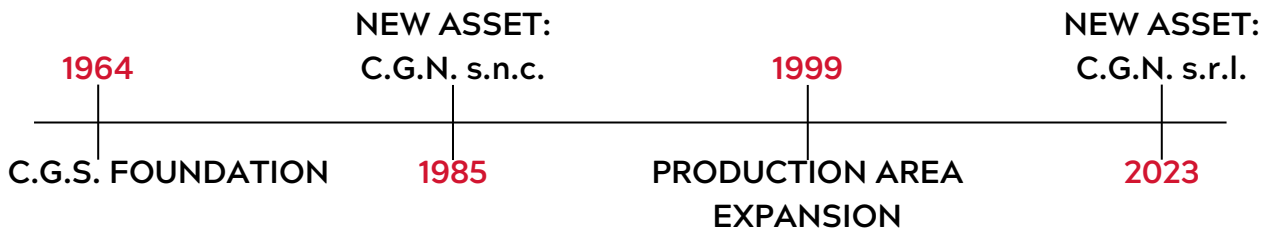
The C.G.S. Company was founded in 1964 and in 1985, following a corporate change, took the name C.G.N., under the leadership of Giusto Ghidoli and Vittorio Magistrelli.

Following the death of Giusto Ghidoli, the Company was taken over by Vittorio Magistrelli and his son Daniele Magistrelli, who, to this day, carry on a history of great success, characterized by major investments in technology, machinery and personnel, which have allowed CGN products to be appreciated worldwide



OUR HISTORY

We produce centrifugal and axial carpentry fans in Milan -Italy

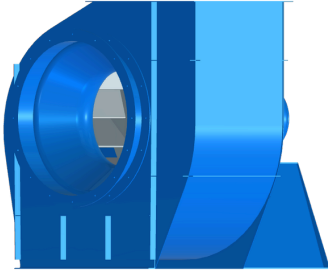


FULL LEGAL NAME	C.G.N. S.R.L.
ESTABLISHMENT YEAR	1964
LOCATION	SEDRIANO - MILAN - ITALY
FACTORY	PRODUCTION 1500 m2 + WHAREHOUSE 500 m2 + OFFICES 200 m2
TEAM	9 EMPLOYERS + 4 CONSULTANT
SOFTWARES	FANS SELECTION - FEM ANALYSIS - CFD ANALYSIS
CERTIFICATES	ATEX - ASME IX - EU CONFORMITY
ENGINEERING	2 CAD STATIONS (AUTOCAD / INVENTOR)

17 CENTRIFUGAL + 6 AXIAL	FAN SERIES
+700°C	OPERATING MAX TEMPERATURE
UP TO 300.000 m3/h	FLOW RATE
UP TO 20.000 Pa	PRESSURE
1-4-5-8-9-12	ARRANGEMENTS
CARBON STEEL - STAINLESS STEELS - PP - PVC - CORROSION / WEAR RESISTANT - HIGH YELD MATERIALS - HARDOX	MATERIALS
FROM 250 mm TO 2500 mm	IMPELLERS ø
TAILOR-MADE FANS FOR SPECIAL PROJECTS	SPECIAL CONSTRUCTIONS
IN-SITE CERTIFICATE CEMB BALANCING MACHINE	IMPELLERS BALANCING
REVAMPING - IN SITE CONSULENCE	OTHER SERVICES

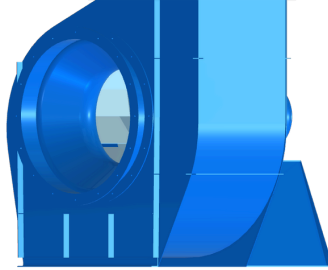
CENTRIFUGAL FANS

VA SERIES



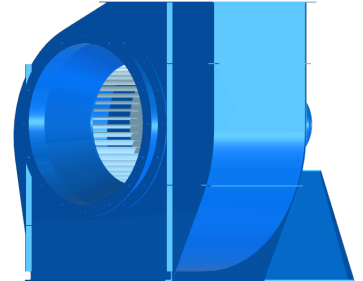
Blades: **Airfoil**
 Available sizes: **18**
 Impellers \varnothing : **From 280 mm to 2000 mm**
 Fluid: **Clean / slightly dusty air and gas**

VR SERIES



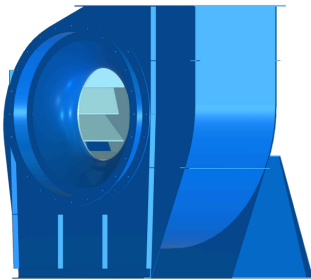
Blades: **Backwardly curved**
 Available sizes: **18**
 Impellers \varnothing : **From 280 mm to 2000 mm**
 Fluid: **Slightly dusty air and gas**

VS SERIES



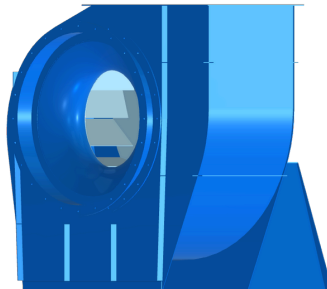
Blades: **Forwardly curved**
 Available sizes: **18**
 Impellers \varnothing : **From 280 mm to 2000 mm**
 Fluid: **Clean / slightly dusty air and gas**

PAA SERIES



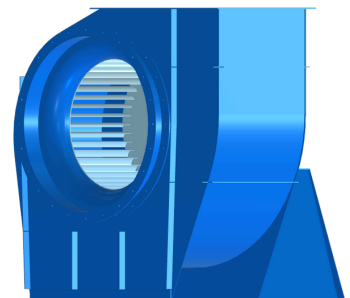
Blades: **Airfoil**
 Available sizes: **19**
 Impellers \varnothing : **From 324 mm to 1870 mm**
 Fluid: **Clean air and gas**

PRR SERIES



Blades: **Backwardly curved**
 Available sizes: **19**
 Impellers \varnothing : **From 324 mm to 1870 mm**
 Fluid: **Clean / slightly dusty air and gas**

PSS SERIES



Blades: **Forwardly**
 Available sizes: **19**
 Impellers \varnothing : **From 324 mm to 1870 mm**
 Fluid: **Clean air and gas**

HTA SERIES



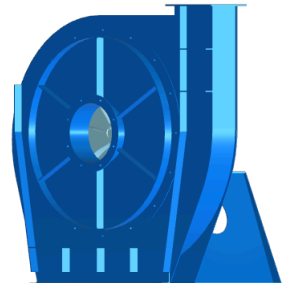
Blades: **Backwardly flat**
 Available sizes: **16**
 Impellers \varnothing : **From 380 mm to 1800 mm**
 Fluid: **Slightly dusty air and gas**

HTM SERIES



Blades: **Radial**
 Available sizes: **16**
 Impellers \varnothing : **From 380 mm to 1800 mm**
 Fluid: **Dusty air and gas and granules**

CNL SERIES



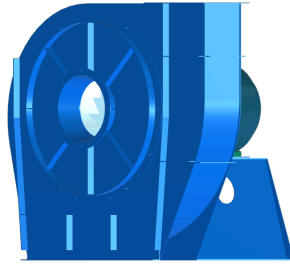
Blades: **Radial curved blades (open/close)**
 Available sizes: **5**
 Impellers \varnothing : **up to 1800 mm**
Pneumatic transport

C1 SERIES



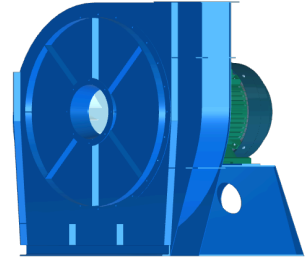
Blades: **Backwardly curved**
Available sizes: **17**
Impellers \varnothing : **From 300 mm to 2000 mm**
Fluid: **Slightly dusty air and gas**

C2 SERIES



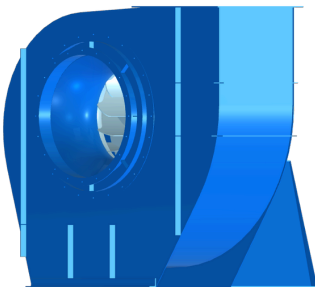
Blades: **Backwardly curved**
Available sizes: **17**
Impellers \varnothing : **From 300 mm to 2000 mm**
Fluid: **Slightly dusty air and gas**

C3 SERIES



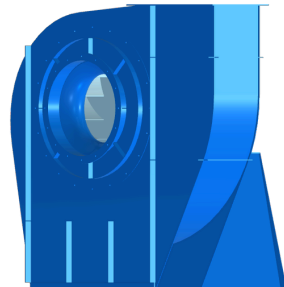
Blades: **Backwardly curved**
Available sizes: **17**
Impellers \varnothing : **From 300 mm to 2000 mm**
Fluid: **Slightly dusty air and gas**

B9 SERIES



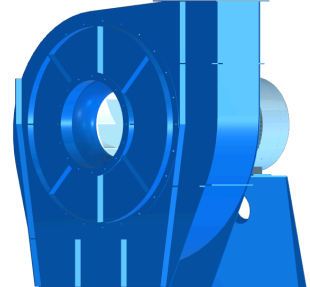
Blades: **Backwardly curved**
Available sizes: **11**
Impellers \varnothing : **From 500 mm to 1600 mm**
Fluid: **Slightly dusty air and gas**

B12 SERIES



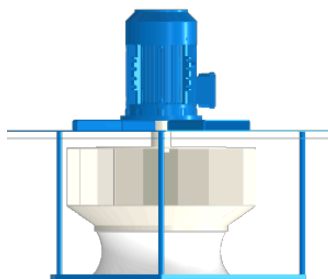
Blades: **Backwardly curved**
Available sizes: **11**
Impellers \varnothing : **From 500 mm to 1600 mm**
Fluid: **Slightly dusty air and gas**

B15 SERIES



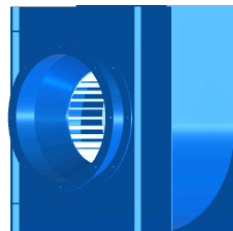
Blades: **Backwardly curved**
Available sizes: **11**
Impellers \varnothing : **From 500 mm to 1600 mm**
Fluid: **Slightly dusty air and gas**

EVO SERIES
















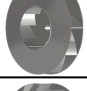

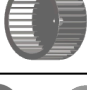

PLUG FANS
Temperature: **Up to 700°C**
Designed for ovens

TE SERIES

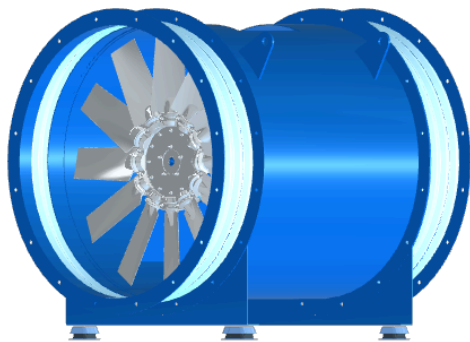


Blades: **Sirocco**
Available sizes: **10**
Impellers \varnothing : **From 100 mm to 450 mm**
Fluid: **Clean air and gas**

TECHNICAL DATA

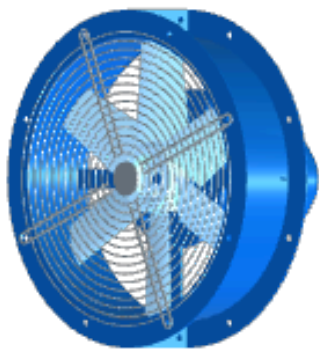
SERIES		BLADES	IMPELLER	FLOW RATE (max)	PRESSURE (max)
PAA		Airfoil	Up to 1870 mm Available in 19 sizes	300.000 m3/h	5.300 Pa
PRR		Backwardly flat	Up to 1870 mm Available in 20 sizes	300.000 m3/h	5.300 Pa
PSS		Sirocco	Up to 1260 mm Available in 15 sizes	175.000 m3/h	3.300 Pa
VA		Airfoil	Up to 2000 mm Available in 18 sizes	240.000 m3/h	3.300 Pa
VR		Backwardly flat	Up to 2000 mm Available in 18 sizes	250.000 m3/h	3.500 Pa
VS		Sirocco	Up to 2000 mm Available in 18 sizes	200.000 m3/h	900 Pa
HTA		Backwardly flat	Up to 1800 mm Available in 16 sizes	150.000 m3/h	5.200 Pa
HTM		Radial with cone	Up to 1800 mm Available in 16 sizes	160.000 m3/h	6.000 Pa
C1		Backwardly curved	Up to 2000 mm Available in 16 sizes	180.000 m3/h	10.500 Pa
C2		Backwardly curved	Up to 2000 mm Available in 16 sizes	95.000 m3/h	10.600 Pa
C3		Backwardly curved	Up to 2000 mm Available in 16 sizes	85.000 m3/h	18.000 Pa
B9		Backwardly curved	Up to 1600 mm Available in 11 sizes	230.000 m3/h	8.800 Pa
B12		Backwardly curved	Up to 1600 mm Available in 11 sizes	180.000 m3/h	12.000 Pa
B15		Backwardly curved	Up to 1600 mm Available in 11 sizes	75.000 m3/h	19.000 Pa
EVO		Backwardly flat	Up to 1870 mm Available in 20 sizes	300.000 m3/h	5.300 Pa
TE		Sirocco	Up to 450 mm Available in 10 sizes	7.000 m3/h	500 Pa
CNL		Radial curved blades (opened/closed)	Up to 800 mm Available in 5 sizes	4200 m3/h	14.000 Pa

AXIAL FANS



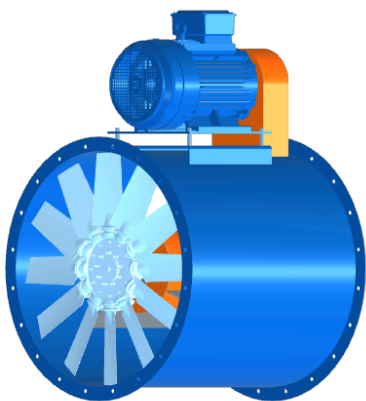
LONG CASE

- Impellers available in aluminium, stainless steel, PPG, PAG
- Welded or bolted blades
- 16 sizes with impellers \varnothing up to 2500 mm
- Fumes extraction, carpenters, dusty and damp air, cement works



SHORT CASE

- Impellers available in aluminium, stainless steel, PPG, PAG
- Welded or bolted blades
- 14 sizes with impellers \varnothing up to 2500 mm
- Fumes extraction, carpenters, dusty and damp air, cement works



TRANSMISSION

- Suitable for temperatures up to 400°C
- Aggressive/hpt fluids transport

SERIES	IMPELLER DIAMETER	FLOW RATE	MAX PRESSURE
VAH	Up to 742 mm	1.500-40.000 m ³ /h	1000 Pa
VAZ	Up to 1295 mm	1.500-150.000 m ³ /h	800 Pa
VAW	Up to 2141 mm	5.000-150.000 m ³ /h	1200 Pa

FANS ACCESSORIES

CENTRIFUGAL FANS

SHOCK ABSORBERS
COUNTERFLANGES
ANTIVIBRATION JOINTS
INSPECTION DOORS
SPECIAL PAINTINGS
FLEXIBLE CONNECTIONS

SEALS (PTFE, AISI, WITH GREASE
BARRIER, ETC...)
INLET/OUTLET GRILLES
DRAIN PLUGS
DAPO' FLOW REGULATORS
OPPOSING VANE LOUVERS

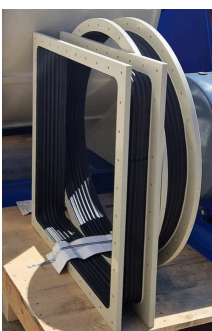
BUTTERFLY VALVES
SOUNDPROOF BOXES
DUST FILTERS
INSULATION
SILENCERS
INLET VANE CONTROLS

AXIAL FANS

FAN SUPPORTS
SHOCK ABSORBERS
ANTIVIBRATION JOINTS
EARTHING BOSS

COUNTERFLANGES
JUNCTION BOX SUPPORT
INSULATION
DRAIN PLUGS

SILENCERS
DAMPERS
PROTECTION GRIDS
CABLE GLANDS



CORROSION RESISTANT FANS

INJECTION MOULDED PP FANS

Ideal solution for aggressive environments

Top energy efficiency

Silence

Flow rate from 150 m³/h to 10.000 m³/h

Pressure from 30 mmH₂O to 250 mmH₂O



WELDED PP/PVC FANS

Completely in PP/PVC

Tailor-made solutions

Flow rate from 1.200 m³/h to 32.000 m³/h

Pressure from 30mmH₂O to 320mmH₂O

Directly coupling or transmission



HEAVY DUTY PP FANS

Casing in PP/PVC

Impellers in Stainless steel - carbon steel with Hebonite / Halar / Säkaphen coating or corrosion resistant painting

Tailor-made solutions

Flow rate from 150 m³/h to 150.000 m³/h

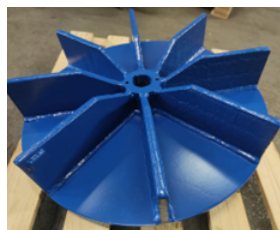
Pressure from 30 mmH₂O to 800 mmH₂O



WEAR/ABRASION RESISTANT IMPELLERS

We manufacture impellers using wear-resistant and corrosion-resistant materials.

HARDOX + CASTOLIN IMPELLERS



OUR SERVICES

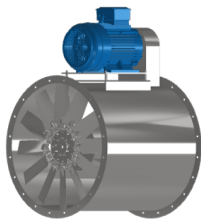
FANS AND SPARE PARTS REVAMPING

We are specialized in the revamping of any fan and we can replicate components and spare parts without original documentation or drawing



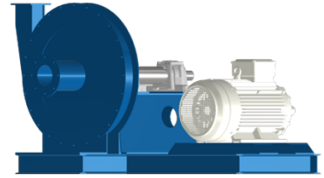
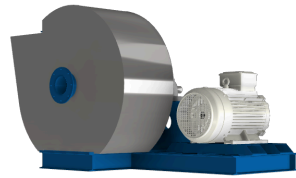
TAILOR-MADE PROJECTS

We design and manufacture custom fans to meet our customers' requirements.



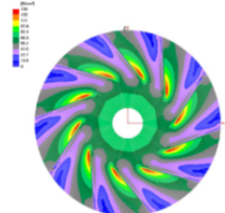
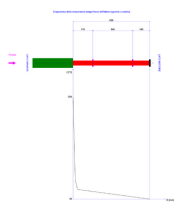
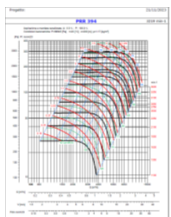
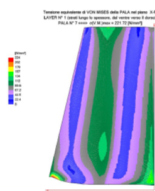
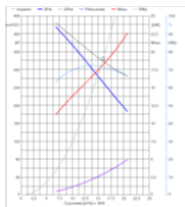
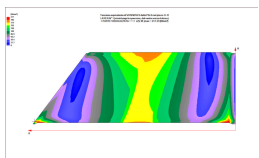
OUR LATEST PROJECT (HIGH TEMPERATURE + HIGH PRESSURE)

Insulated for temperature up to 400 °C
Transmission coupling
Fan revolutions: 5300 rpm
Q= 600 m3/h
Hs= up to 2300 mmH2O (20°C)



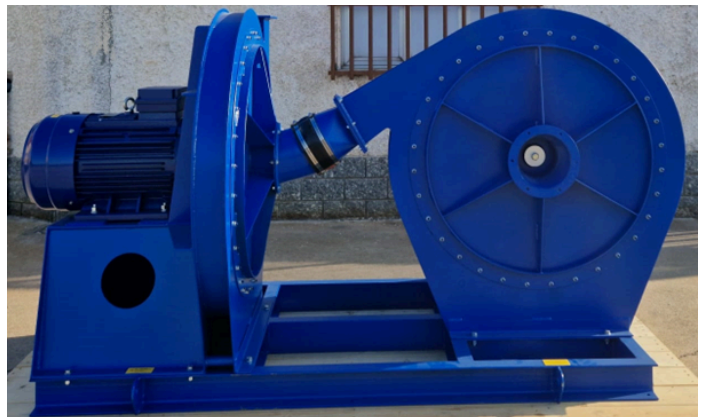
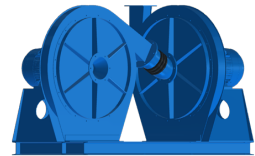
OUR TECHNOLOGIES

We have at our disposal advanced technologies for the projection of our products and a selection software



DOUBLE STAGE CENTRIFUGAL FAN

Fans revolutions: 2950 rpm
Q= 2750 m3/h
Hs= 2700 mmH2O (20°C)
Installed power= 22 kW



FANS DIRECTIVES

OUR FANS COMPLY WITH THE FOLLOWING DIRECTIVES:

DIRECTIVES:

2006/42/CE (Machinery Directive)

2014/35/EU (Low Voltage Directive)

2014/30/EU (Electromagnetic Compatibility)

REG. EU 305/2011 (CPR)

HIGH TEMPERATURE FANS:

EN 12101-3:2015 (Smoke and heat control systems - Part 3: Specification for powered smoke and heat control ventilators)

ATEX:

2014/34/EU (ATEX DIRECTIVE)

UNI EN 14986:2024

EN 13463-1 (Non-electrical equipment intended for potentially explosive atmospheres. Part 1: Basic requirements and methodology)

EN 1127-1 (Explosive atmospheres. Explosion prevention and protection. Part 1: Basic concepts basics and methodology)

SAFETY (CE Declaration of Conformity):

EN ISO 12100-1 (Safety of machinery - Basic concepts, general design principles - Part 1: Basic terminology, methodology)

EN ISO 12100-2 (Safety of machinery - Basic concepts, general design principles - Part 2: Technical principles)

EN 60204-1:2018 (Machine safety. Electrical system of machines. Part 1: General requirements)

ISO 13857 (Safety of machinery - Safety distances to prevent reaching dangerous areas with upper and lower limbs)

ISO 12499 (Industrial fans - Mechanical safety of fans - Guarding)

FUNCTIONAL TESTINGS:

ISO 5801/17 (Fans - Performance testing using standardized airways)

AMCA 210-07 (Laboratory Methods Of Testing Fans For Certified Aerodynamic)

UNE 100212:1990 (Fans. Equipments and setups for laboratory testings)

ISO 13348-07 (Industrial fans - Tolerances, methods of conversion and technical data presentation)

BALANCING AND VIBRATIONS:

ISO 1940-1:2017 (Mechanical vibration - Balance quality requirements for rotors in a constant -rigid state)

ISO 10816-1:2016 (Mechanical vibration - Measurement and evaluation of machine vibration)

ISO 14694:2003 (Industrial fans - Specifications for balance quality and vibration levels)

ACOUSTICS:

ISO 3744:2010 (Acoustics - Determination of sound power levels and sound energy levels of noise sources using sound pressure - Engineering methods for an essentially free field over a reflecting plane)

OUR CONTACTS

FULL LEGAL NAME	C.G.N. s.r.l.
HEADQUARTER	Loc. Cascina Scaravella 44, 20018 Sedriano (Milan) Italy
EMAIL	cgn@cgn-ventilazione.it
PHONE	+39 02 90111023
WEB	www.cgn-ventilazione.it
VAT	IT 07823920157

We have built more than 30.000 centrifugal and axial fans
Our fans have been sold in more than 50 States

